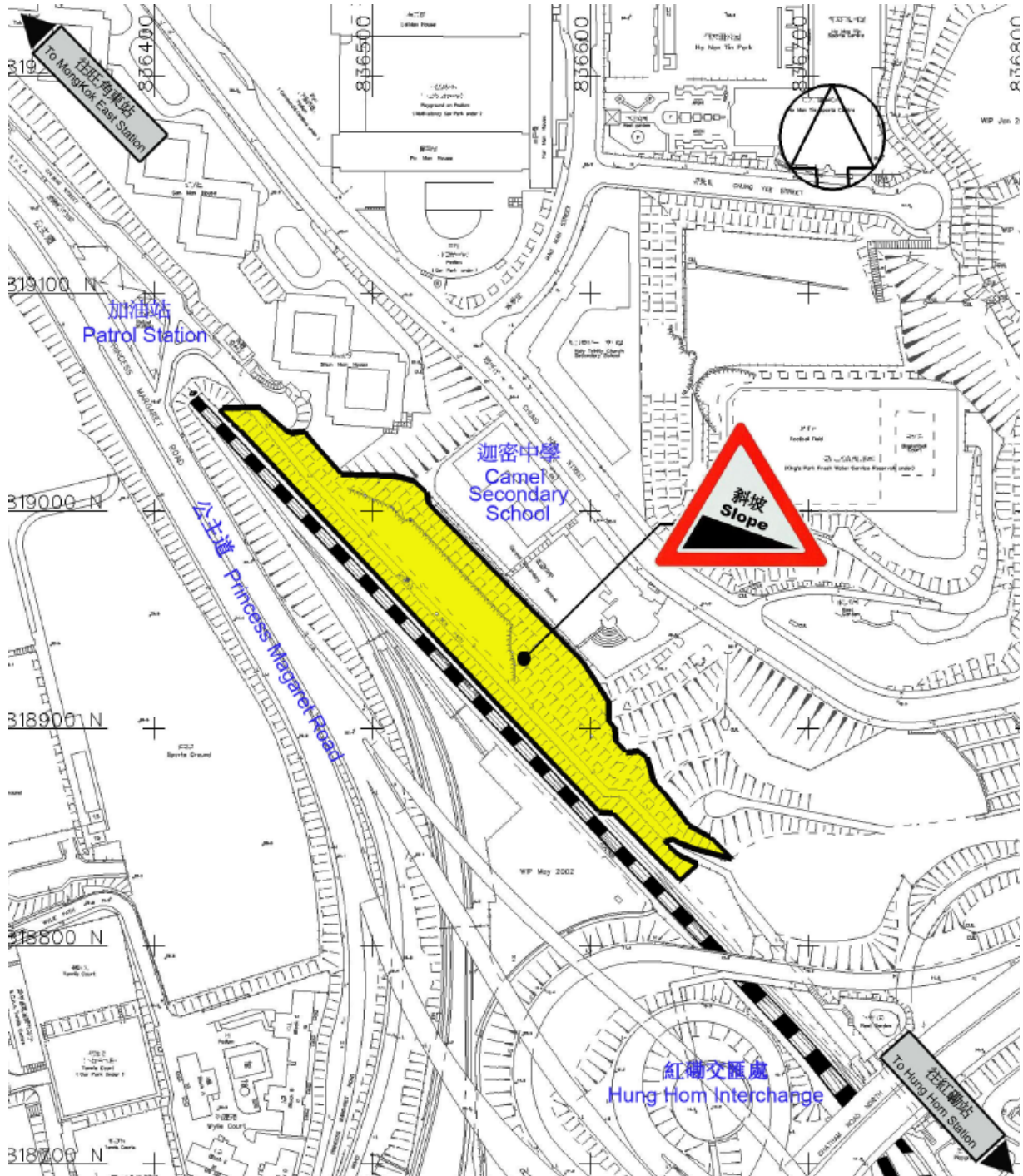


第二期東鐵綫斜坡改善工程

East Rail Line Slope Improvement Works - Phase II

改善工程位置:	紅磡站及旺角東站之間 (近迦密中學)
Location of Improvement Works:	Between Hung Hom Station and Mong Kok East Station (Near Carmel Secondary School)

位置圖 Location Map



第二期東鐵綫斜坡改善工程
East Rail Line Slope Improvement Works - Phase II

改善前 Before Improvement



改善後 After Improvement

